



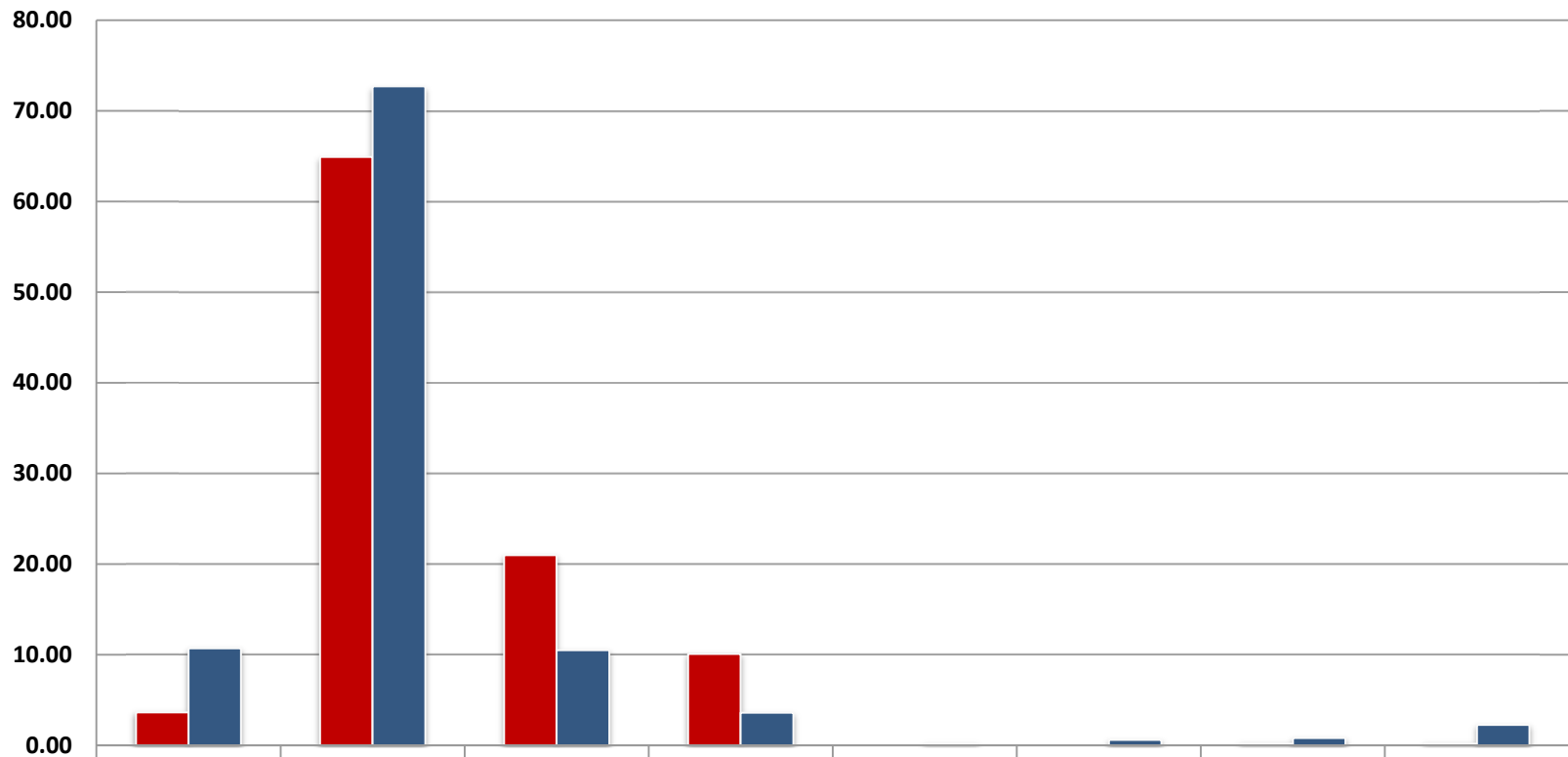
**U.S. Department of Commerce**

**Quarter II**

**Fiscal Year 2012**

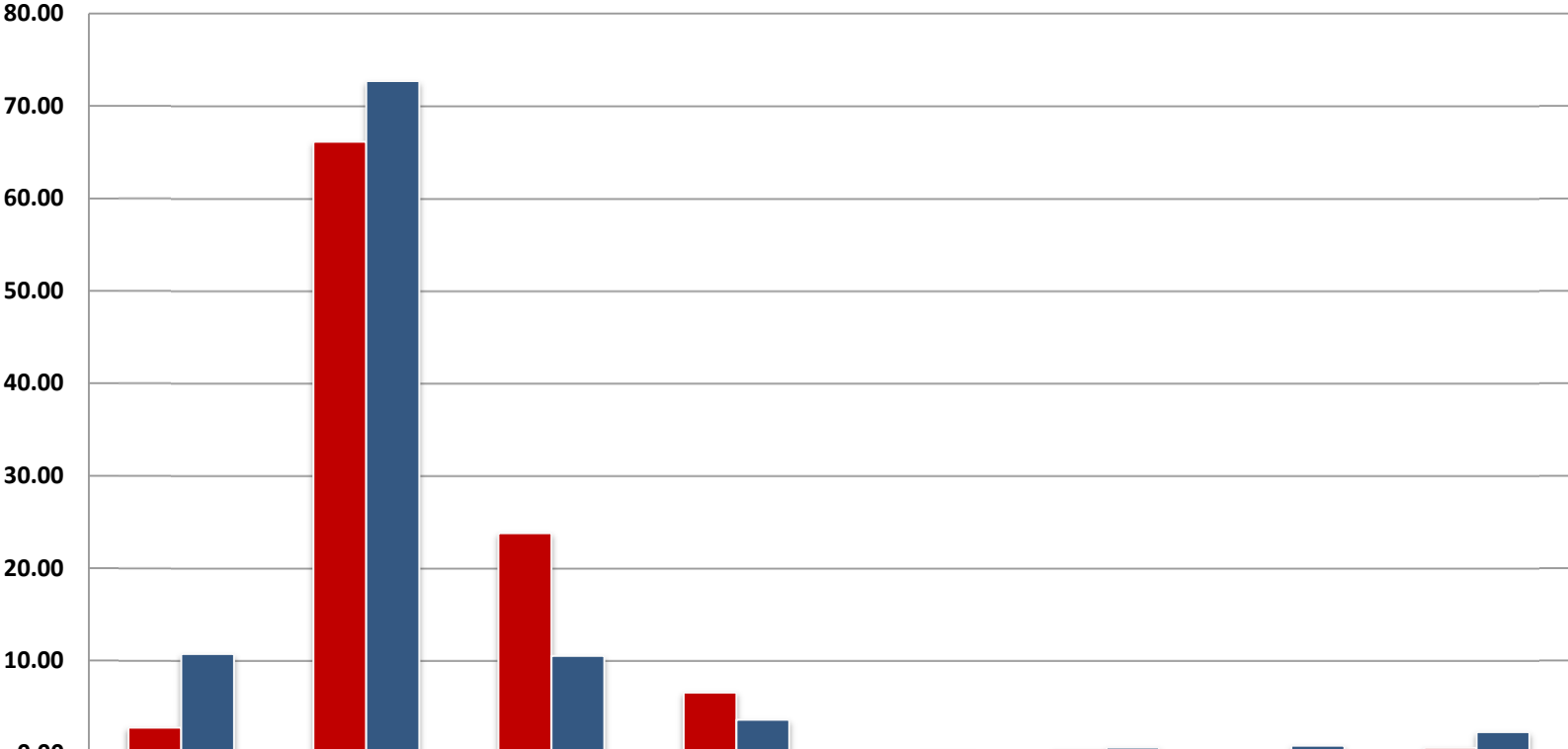
**Departmental Workforce Profile**

# BEA Quarter 2 2012



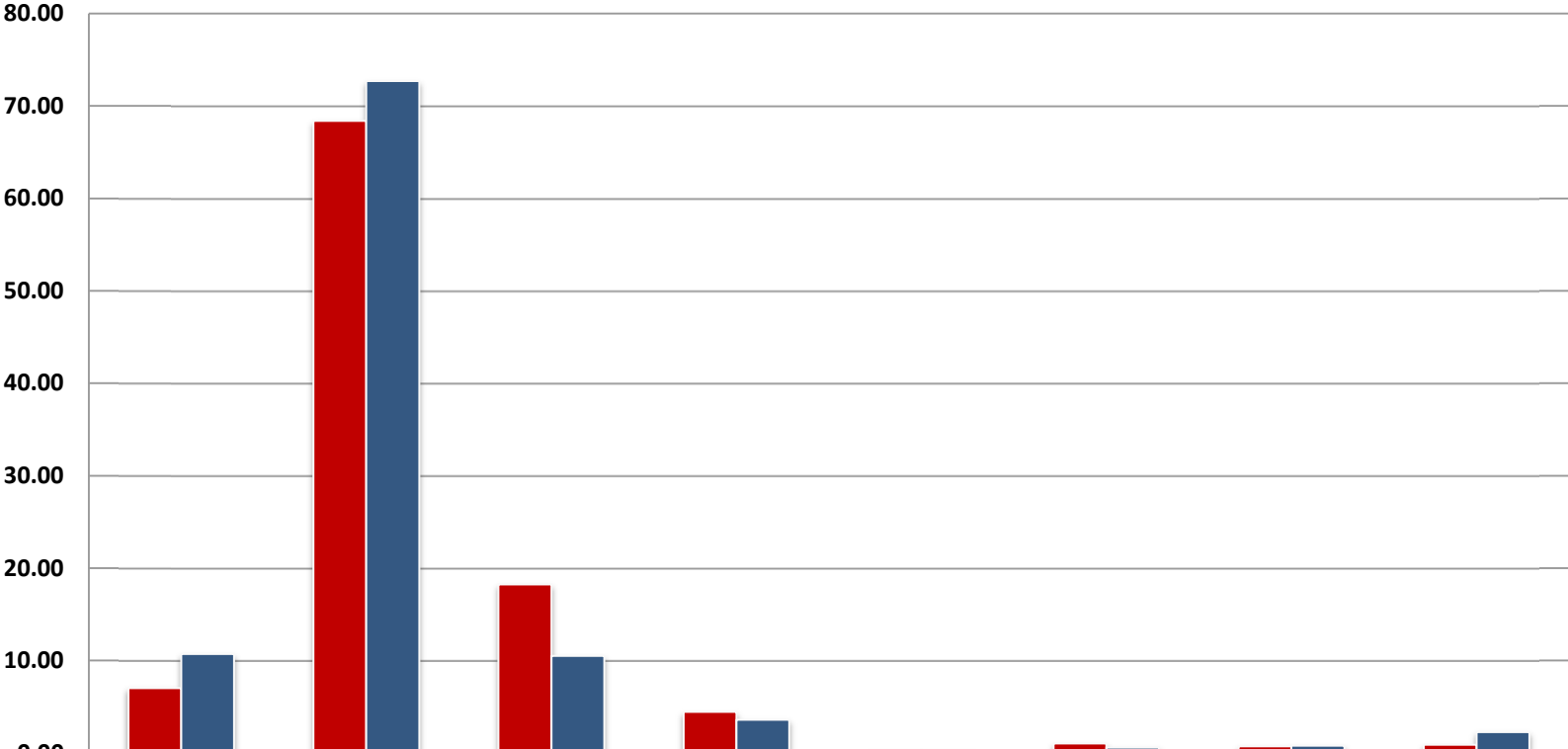
	Hispanic or Latino	White	Black or African American	Asian	Native Hawaiian or Other Pacific Islander	American Indian or Alaska Native	Multiple Races	Targeted Disability
Workforce	3.63	64.92	20.97	10.08	0.00	0.00	0.20	0.20
CLF	10.7	72.7	10.5	3.6	0.2	0.6	0.8	2.27

# BIS Quarter 2 2012



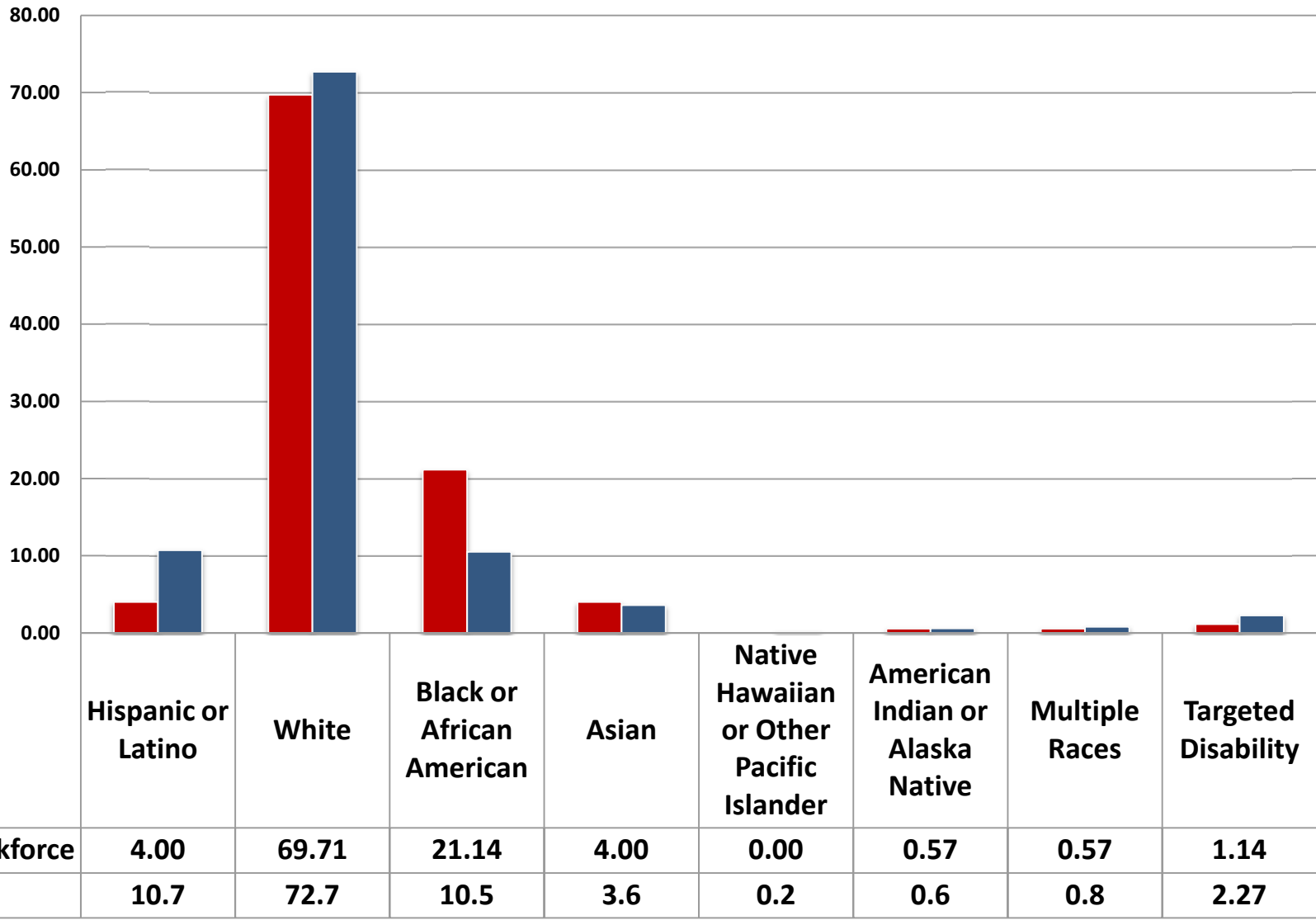
	Hispanic or Latino	White	Black or African American	Asian	Native Hawaiian or Other Pacific Islander	American Indian or Alaska Native	Multiple Races	Targeted Disability
■ Workforce	2.73	66.12	23.77	6.56	0.00	0.27	0.00	0.55
■ CLF	10.7	72.7	10.5	3.6	0.2	0.6	0.8	2.27

# Census Quarter 2 2012

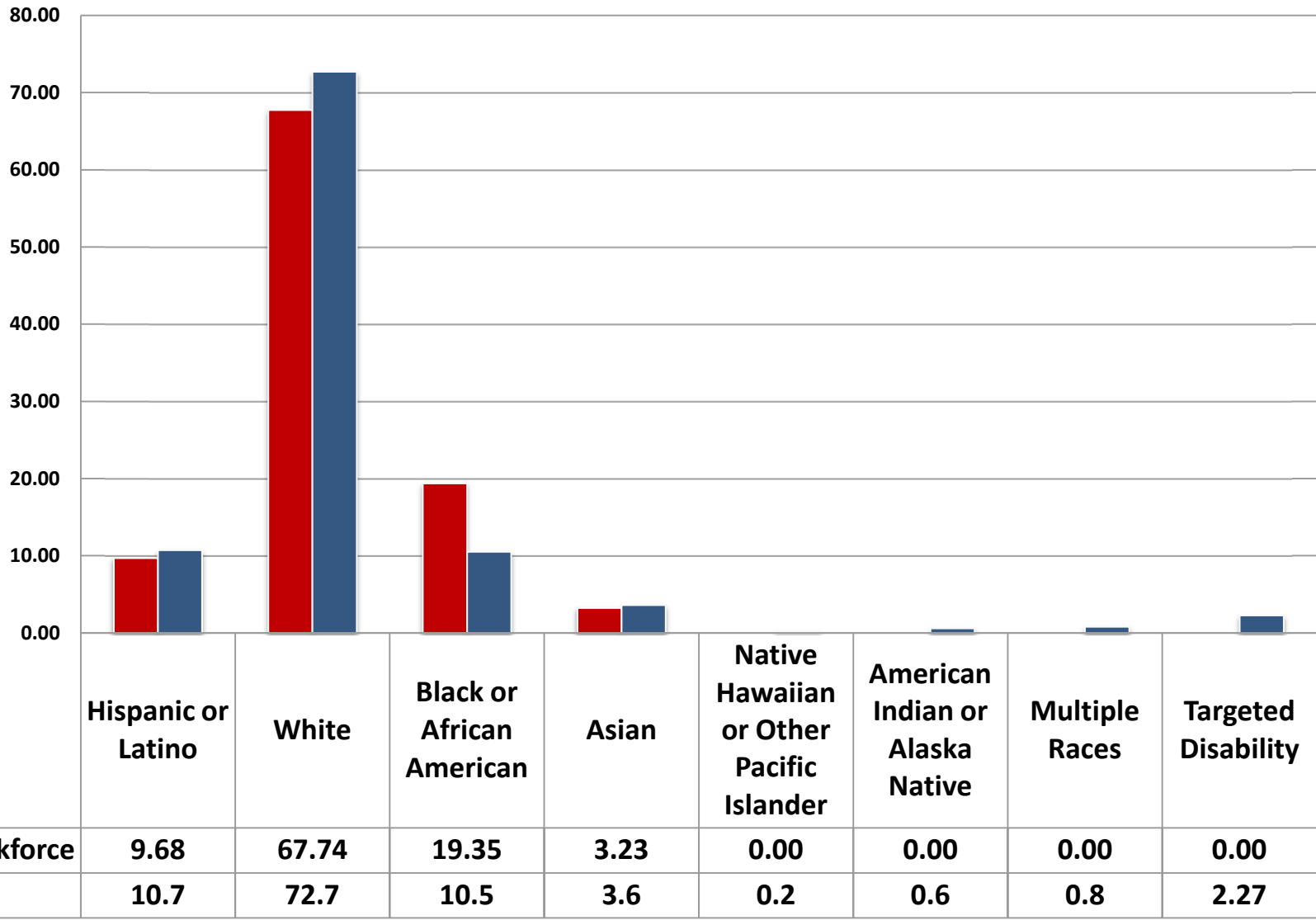


	Hispanic or Latino	White	Black or African American	Asian	Native Hawaiian or Other Pacific Islander	American Indian or Alaska Native	Multiple Races	Targeted Disability
■ Workforce	7.03	68.38	18.24	4.45	0.15	1.02	0.72	0.89
■ CLF	10.7	72.7	10.5	3.6	0.2	0.6	0.8	2.27

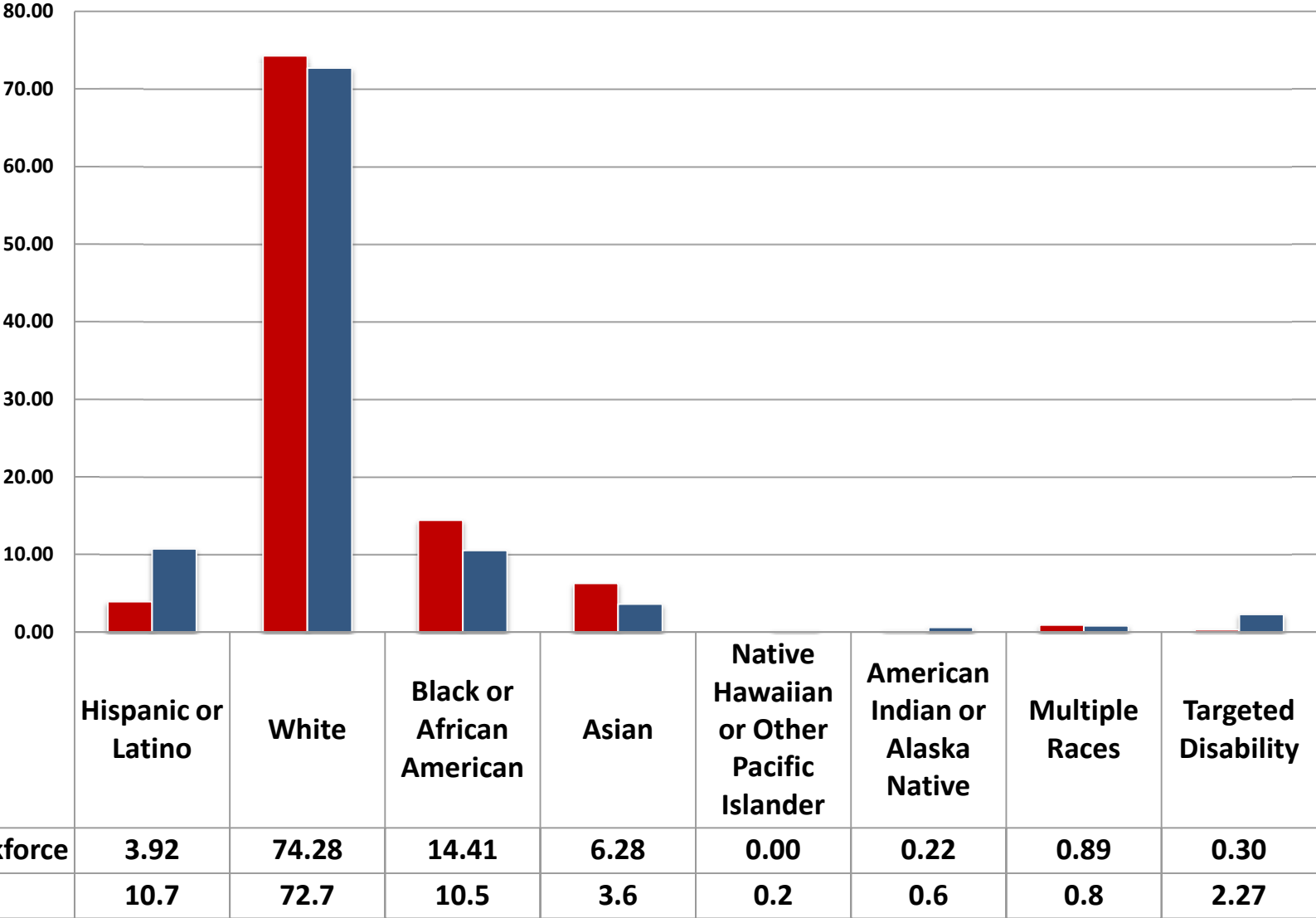
# EDA Quarter 2 2012



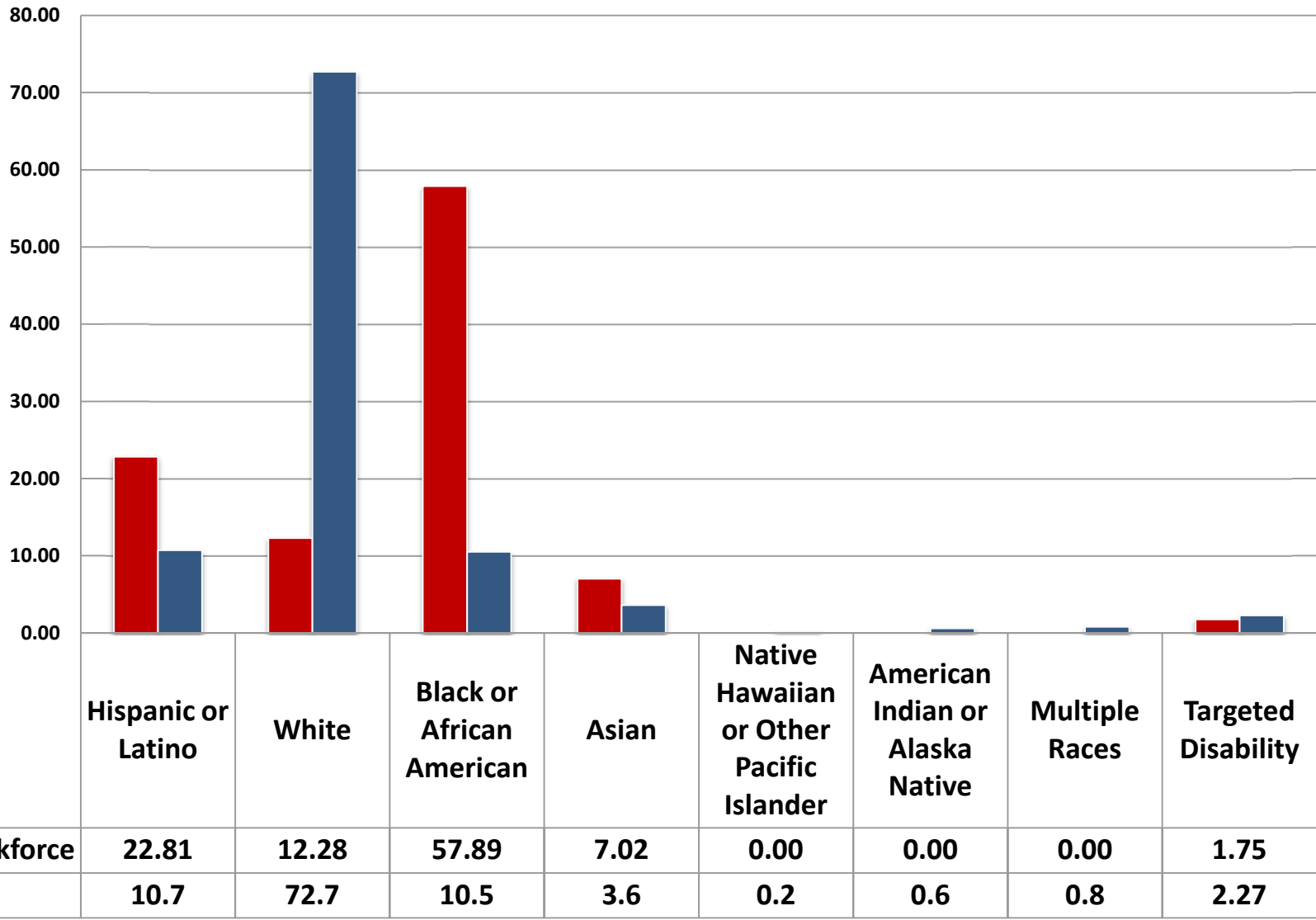
# ESA Quarter 2 2012



# ITA Quarter 2 2012

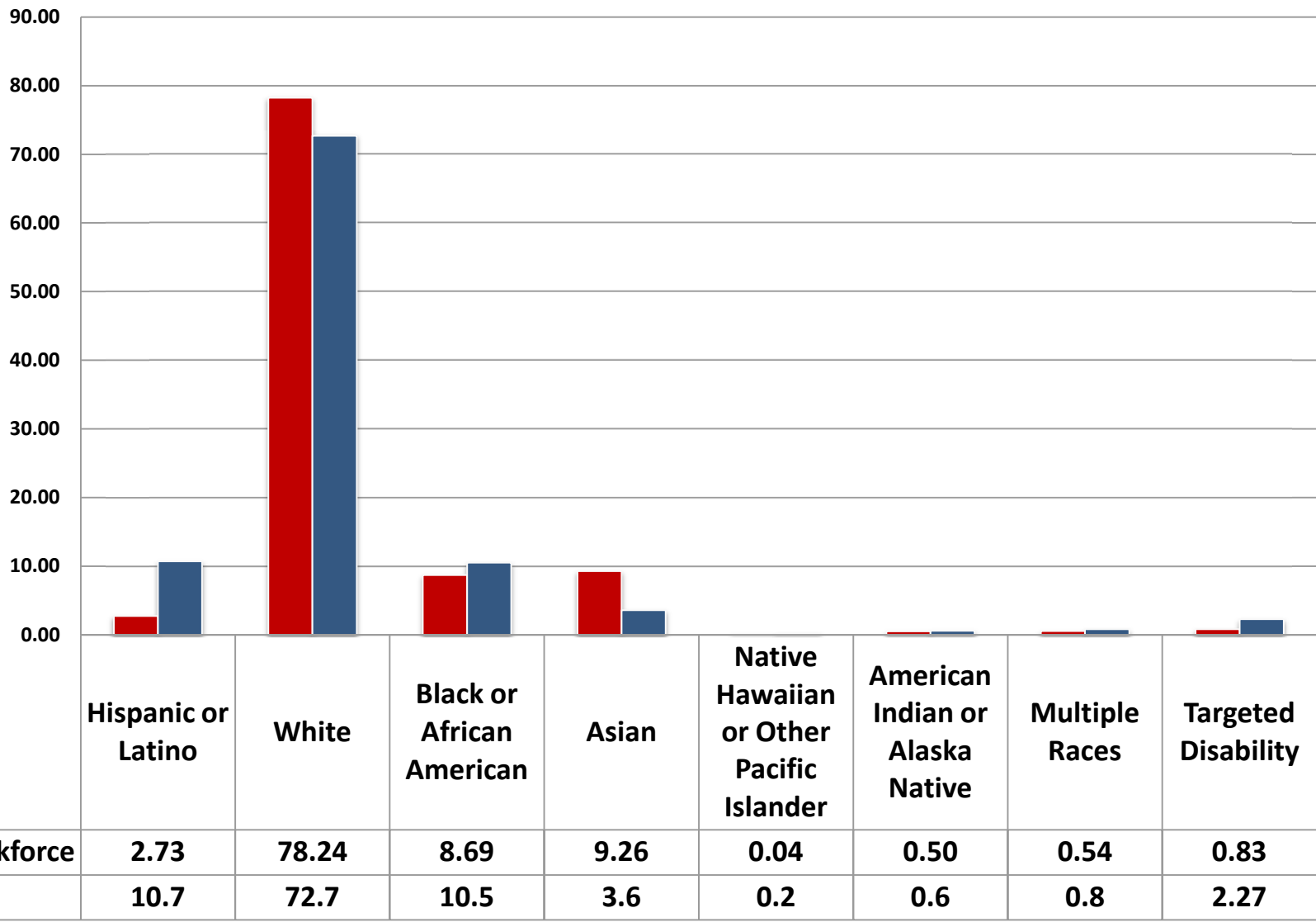


# MBDA Quarter 2 2012

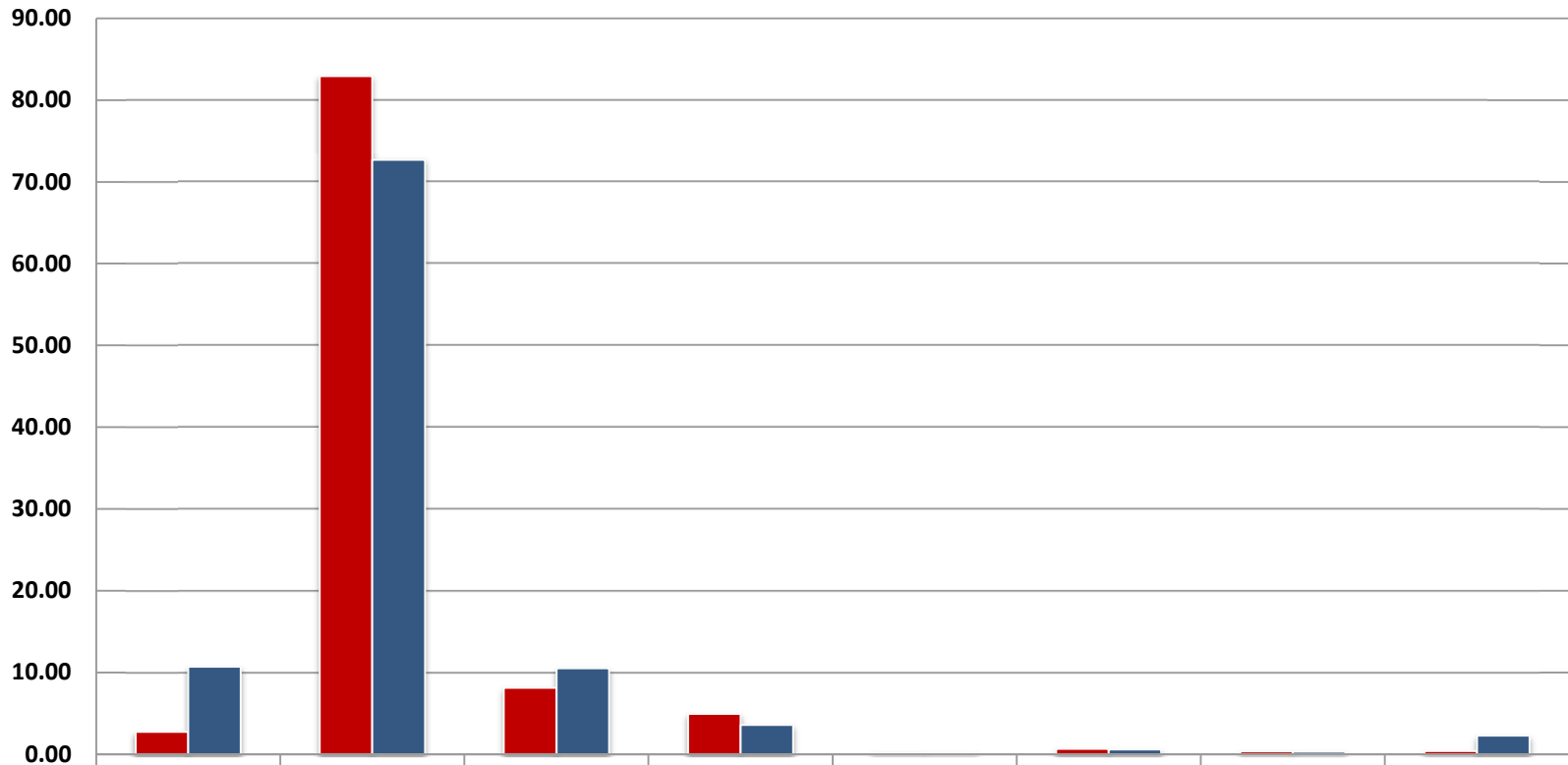




# NIST Quarter 2 2012

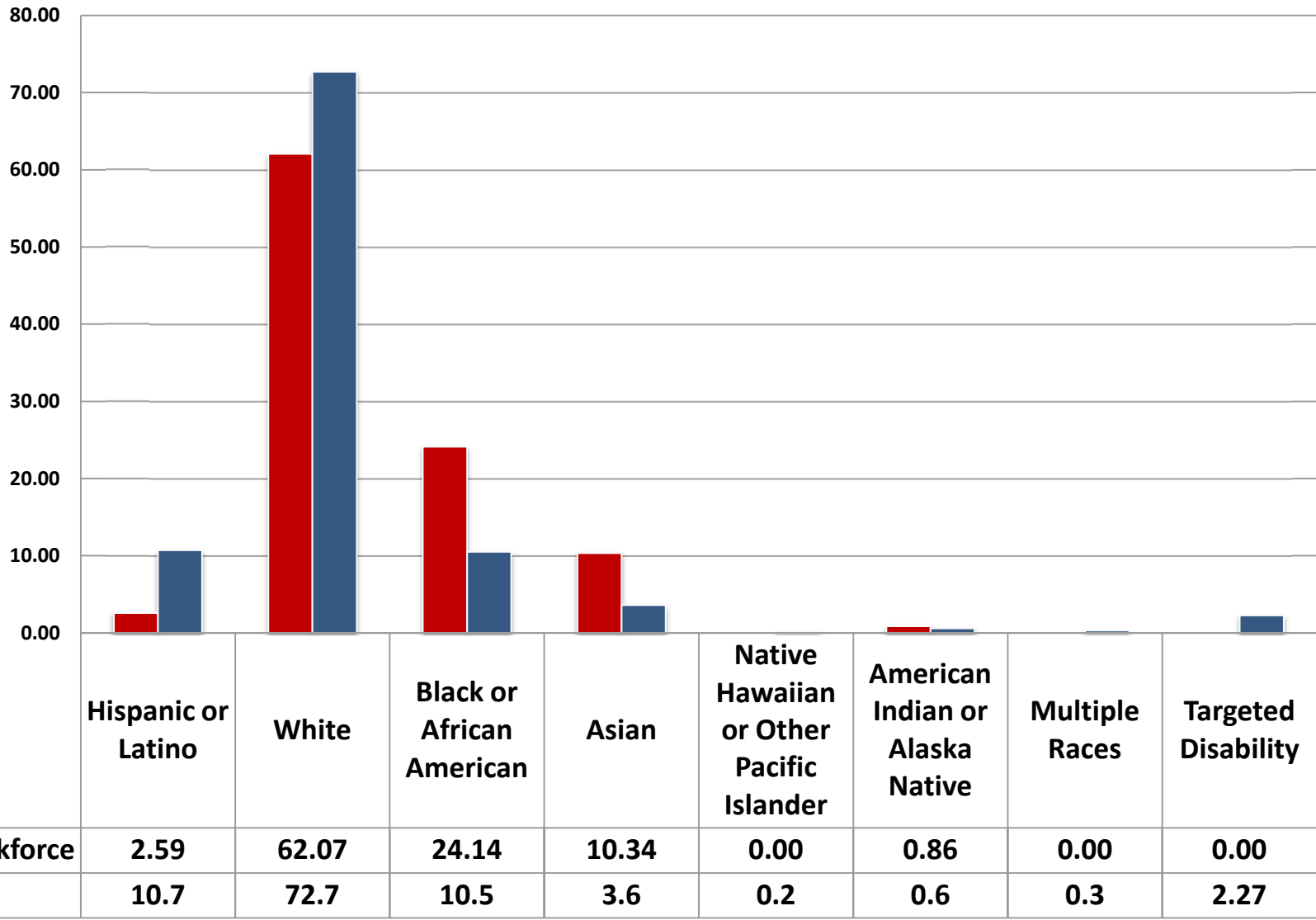


# NOAA Quarter 2 2012

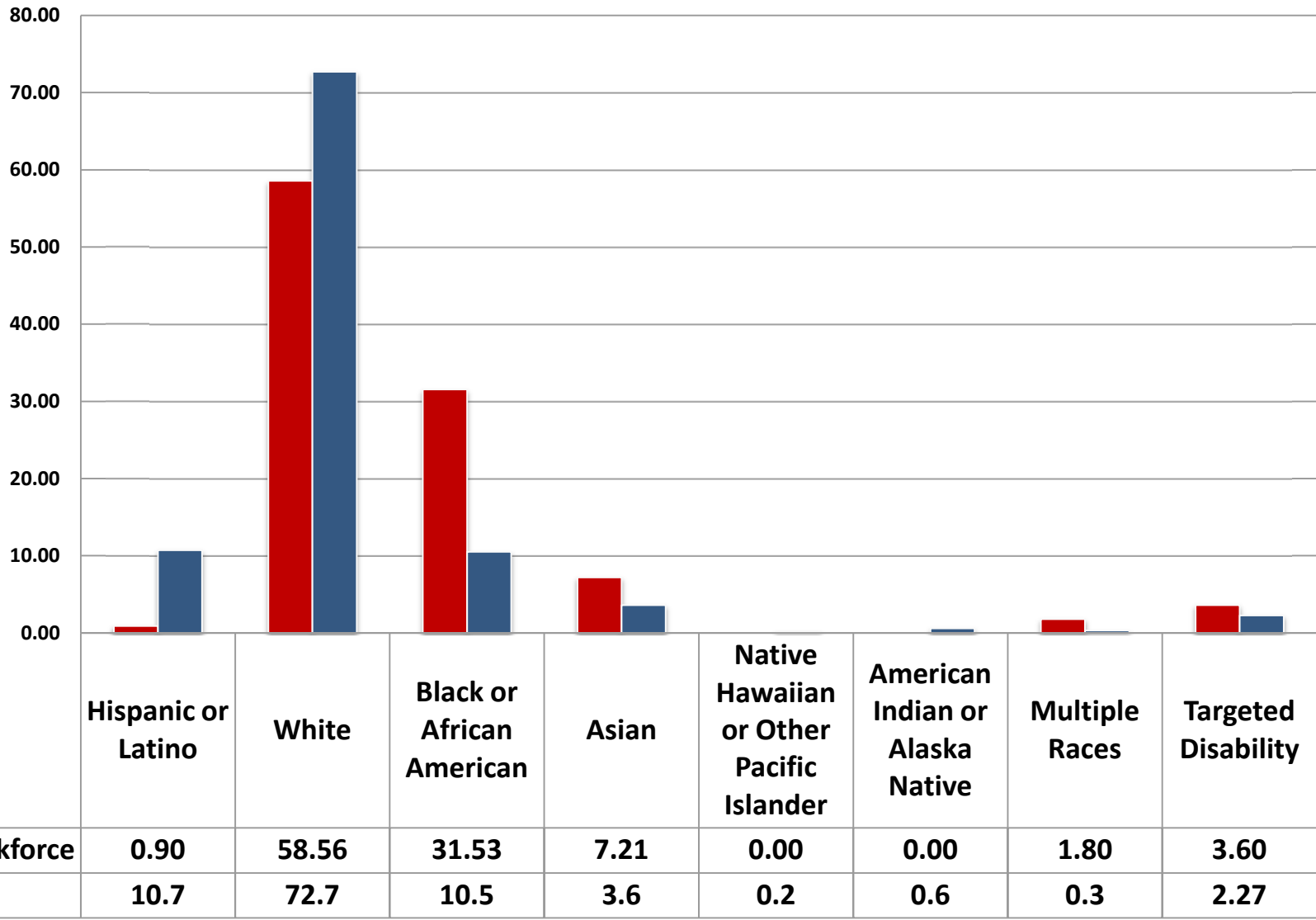


	Hispanic or Latino	White	Black or African American	Asian	Native Hawaiian or Other Pacific Islander	American Indian or Alaska Native	Multiple Races	Targeted Disability
■ Workforce	2.75	82.95	8.12	4.94	0.23	0.66	0.35	0.39
■ CLF	10.7	72.7	10.5	3.6	0.2	0.6	0.3	2.27

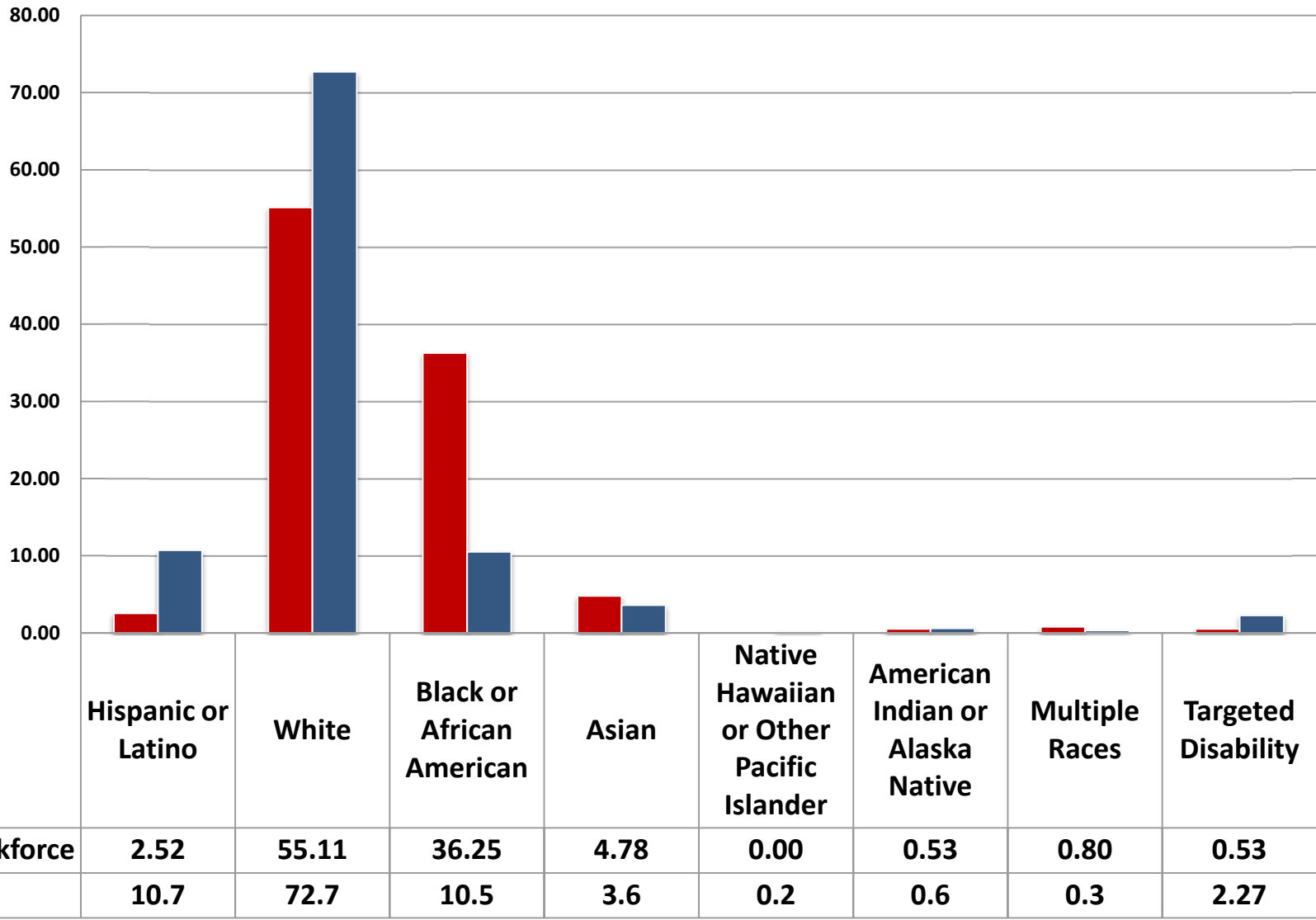
# NTIA Quarter 2 2012



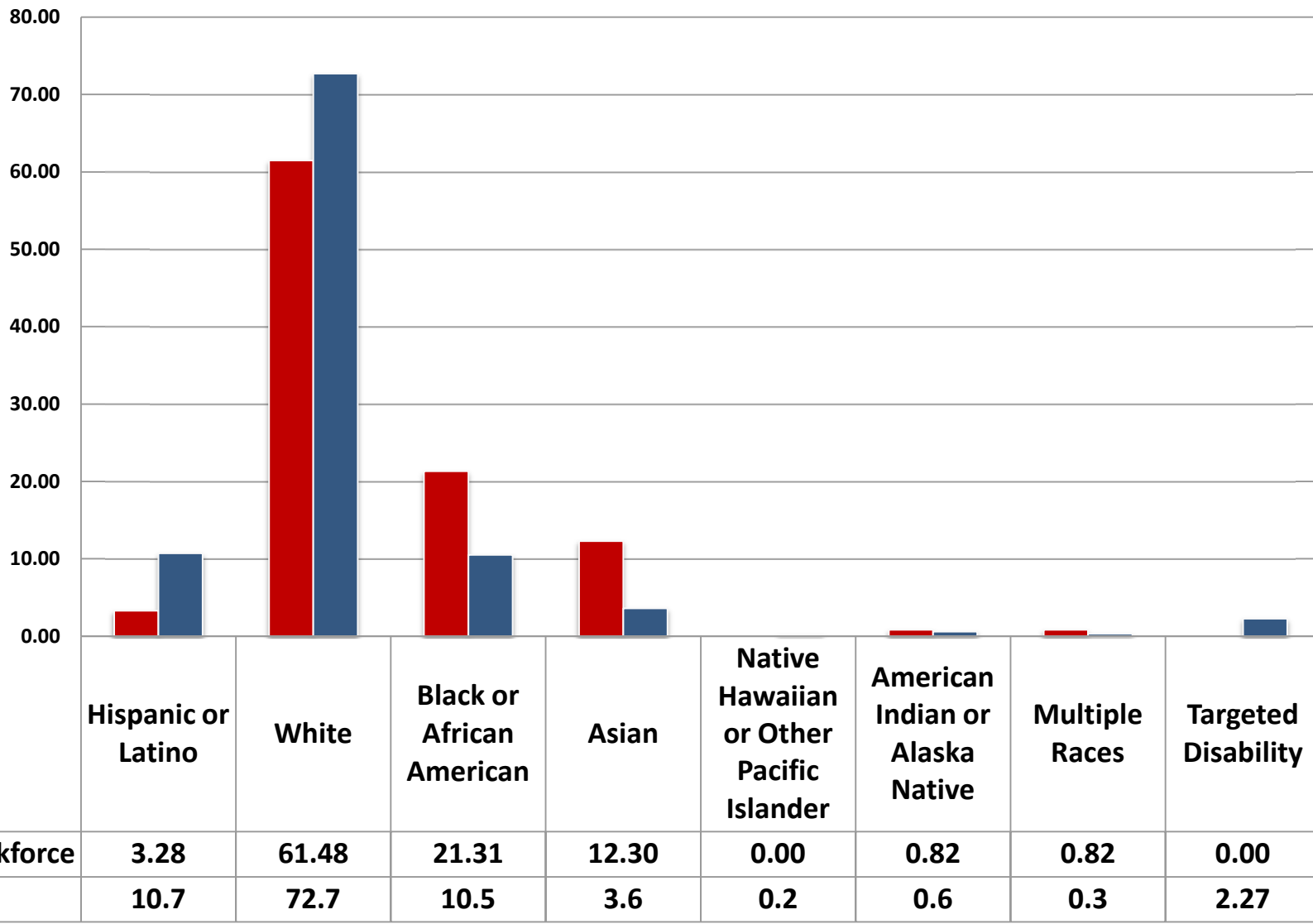
# NTIS Quarter 22012



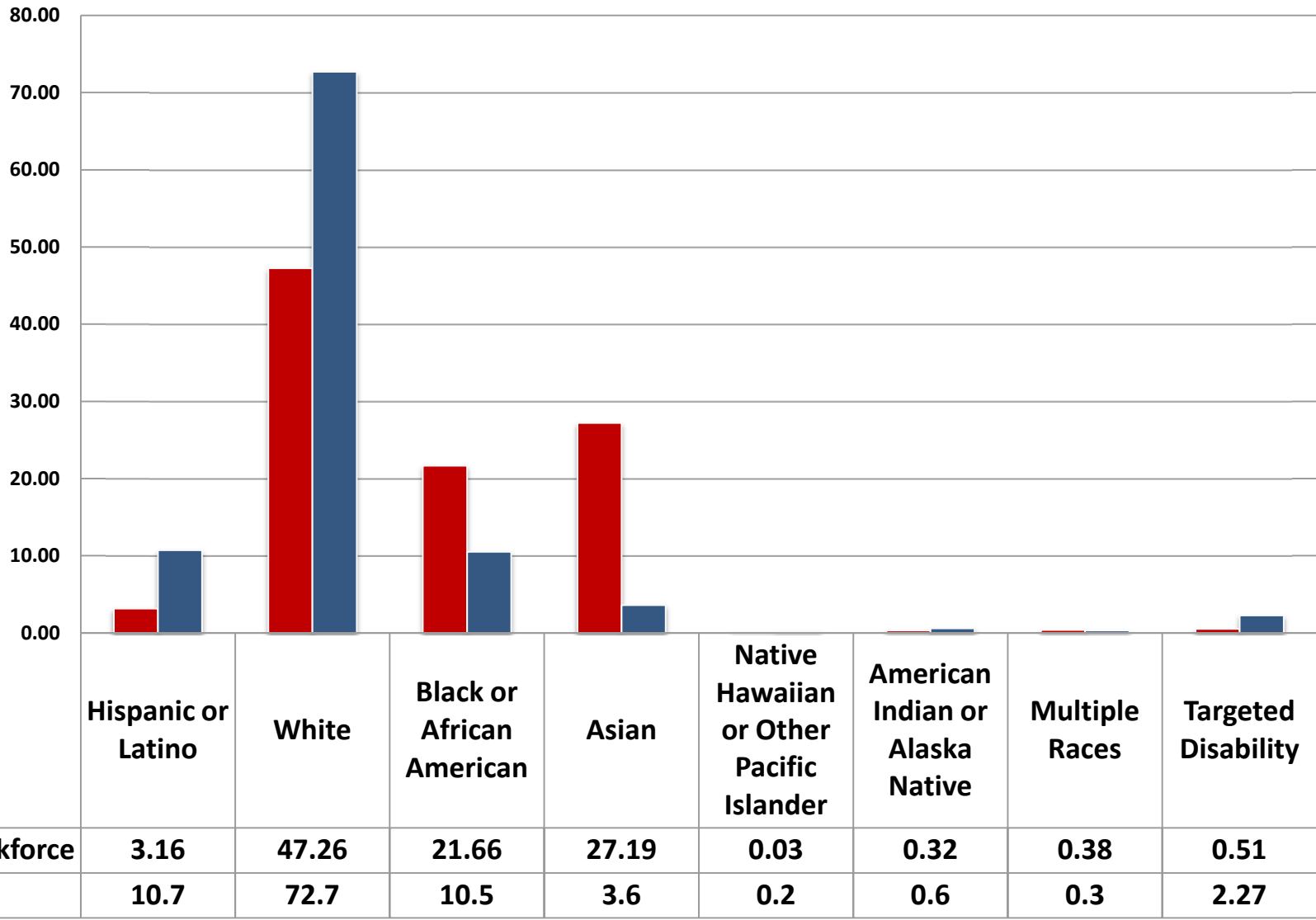
# OS Quarter 2 2012



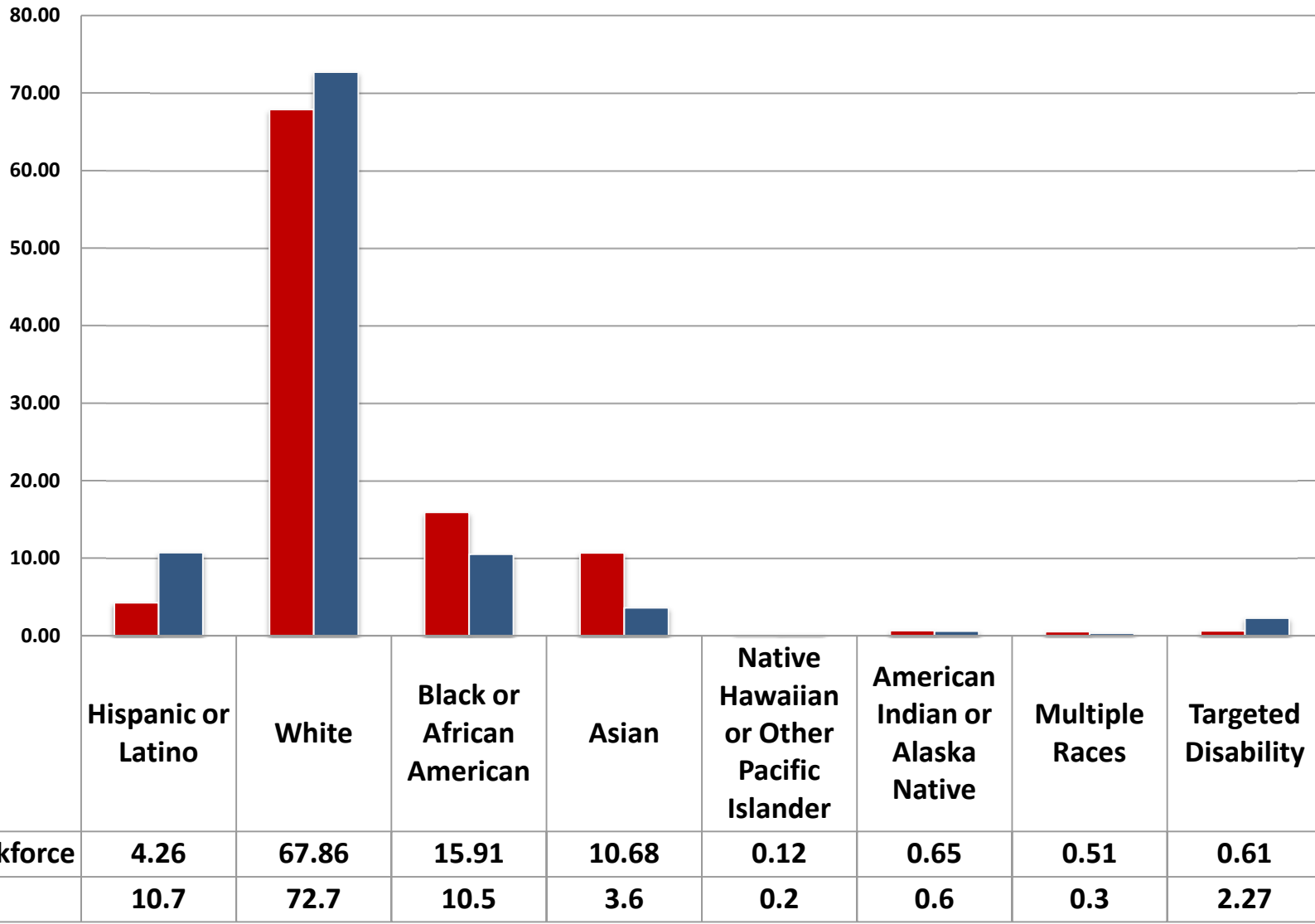
# OIG Quarter 2 2012



# PTO Quarter 2 2012



# DOC All Quarter 2 2012





# DOC Non-PTO Quarter 2 2012

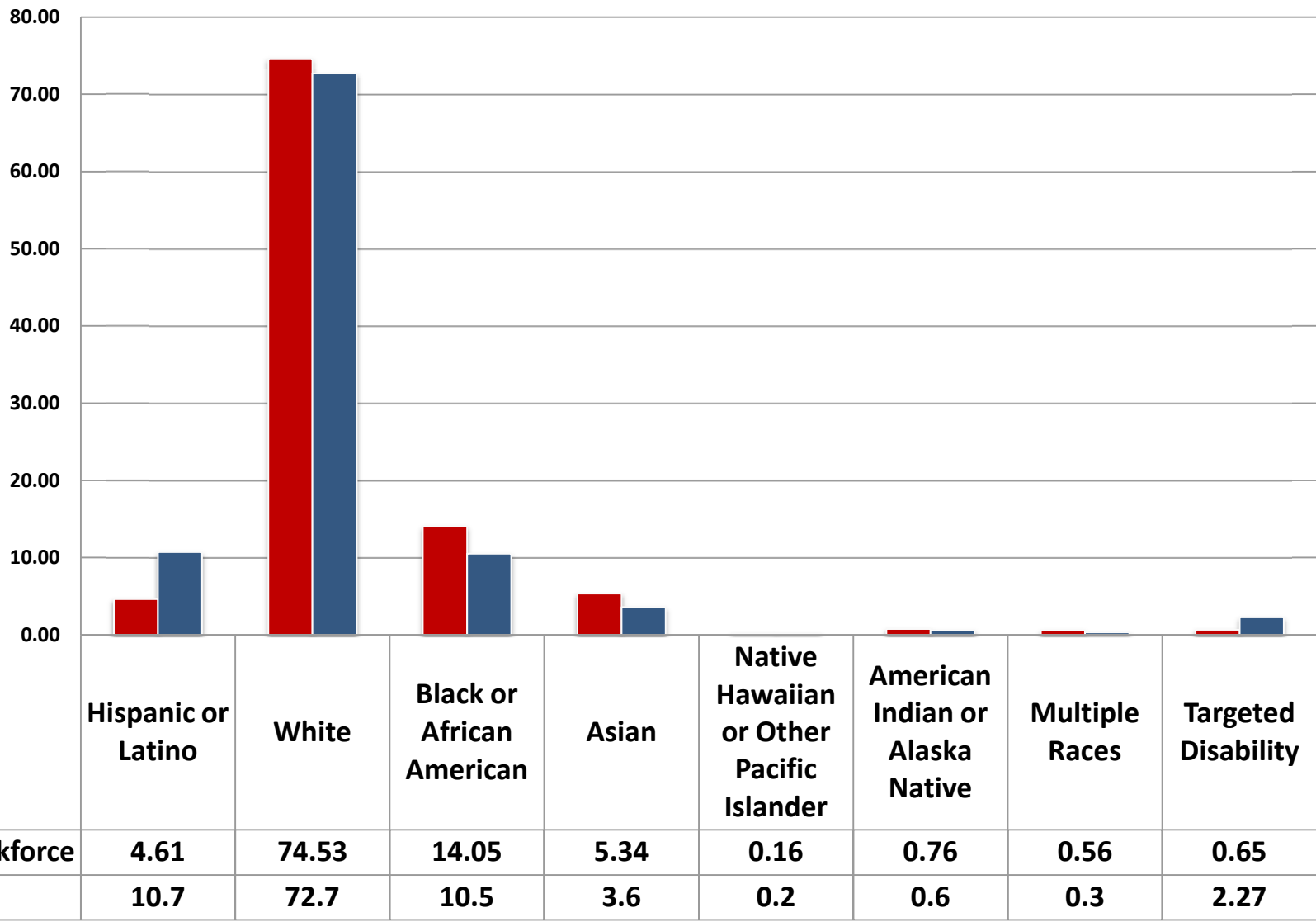


Table A1: TOTAL WORKFORCE - Distribution by Race/Ethnicity and Sex

Employment Tenure	Total Employees	RACE/ETHNICITY						Multiple Races
		Hispanic or Latino	Non-Hispanic or Latino					
			White	Black or African American	Asian	Native Hawaiian or Other Pacific Islander	American Indian or Alaska	
All								

TOTAL

Prior FY	#	45,842	1,934	31,339	7,341	4,641	56	291	240
	%	100.0%	4.2%	68.4%	16.0%	10.1%	0.1%	0.6%	0.5%
Current FY	#	44,461	1,885	30,302	7,009	4,678	59	284	244
	%	100.0%	4.2%	68.2%	15.8%	10.5%	0.1%	0.6%	0.5%
CLF (2000)	%	100.0%	10.2%	72.7%	10.5%	3.6%	0.2%	0.6%	0.3%
Difference	#	-1,381	-49	-1,037	-332	37	3	-7	4
Ratio Change	%	0.0%	0.0%	-0.2%	-0.2%	0.4%	0.0%	0.0%	0.0%
Net Change	%	-3.0%	-2.5%	-3.3%	-4.5%	0.8%	5.4%	-2.4%	1.7%
PERMANENT									
Prior FY	#	42,632	1,793	29,025	6,817	4,471	51	278	197
	%	100.0%	4.2%	68.1%	16.0%	10.5%	0.1%	0.7%	0.5%
Current FY	#	42,623	1,814	28,926	6,782	4,552	53	277	219
	%	100.0%	4.3%	67.9%	15.9%	10.7%	0.1%	0.6%	0.5%
Difference	#	-9	21	-99	-35	81	2	-1	22
Ratio Change	%	0.0%	0.1%	-0.2%	-0.1%	0.2%	0.00%	0.00%	0.05%
Net Change	%	0.0%	1.2%	-0.3%	-0.5%	1.8%	3.9%	-0.4%	11.2%
TEMPORARY									
Prior FY	#	3,210	141	2,314	524	170	5	13	43
	%	100.0%	4.4%	72.1%	16.3%	5.3%	0.2%	0.4%	1.3%
Current FY	#	1,838	71	1,376	227	126	6	7	25
	%	100.0%	3.9%	74.9%	12.4%	6.9%	0.3%	0.4%	1.4%
Difference	#	-1,372	-70	-938	-297	-44	1	-6	-18
Ratio Change	%	0.0%	-0.5%	2.8%	-4.0%	1.6%	0.2%	0.0%	0.0%
Net Change	%	-42.7%	-49.6%	-40.5%	-56.7%	-25.9%	20.0%	-46.2%	-41.9%

**Table B1: TOTAL WORKFORCE - Distribution by Disability**

Employment Tenure	Total	Total by Disability Status				Detail for Targeted Disabilities									
		[05] No Disability	[01] Not Identified	[06-94] Disability	Targeted Disability	[16,17] Deafness	[23,25] Blindness	[28, 32-38] Missing Limbs	[64-68] Partial Paralysis	[71-78] Total Paralysis	[82] Convulsive Disorder	[90] Mental Re-tardation	[91] Mental Illness	[92] Distortion of Limb/ Spine	
<b>TOTAL</b>															
Prior FY	#	45,842	41,548	1,254	2,758	282	24	19	3	15	6	63	22	123	7
	%	100.0%	90.6%	2.7%	6.0%	0.6%	0.1%	0.0%	0.0%	0.0%	0.0%	0.1%	0.0%	0.3%	0.0%
Current FY	#	44,461	40,337	1,201	2,657	266	22	14	2	14	5	60	22	120	7
	%	1.0%	0.9%	0.0%	0.1%	0.0%	0.0%	0.0%	0.0%	0.0%	0.0%	0.0%	0.0%	0.0%	0.0%
Difference	#	-1,381	-1,211	-53	-101	-16	-2	-5	-1	-1	-1	-3	0	-3	0
Ratio Change	%	0.0%	0.1%	0.0%	0.0%	0.0%	0.0%	0.0%	0.0%	0.0%	0.0%	0.0%	0.0%	0.0%	0.0%
Net Change	%	-3.0%	-2.9%	-4.2%	-3.7%	-5.7%	-8.3%	-26.3%	-33.3%	-6.7%	-16.7%	-4.8%	0.0%	-2.4%	0.0%
Federal High	%					2.27%									
<b>PERMANENT</b>															
Prior FY	#	42,632	38801	1094	2467	270	23	19	3	15	6	60	22	117	5
	%	100.0%	91.0%	2.6%	5.8%	0.6%	0.1%	0.0%	0.0%	0.0%	0.0%	0.1%	0.1%	0.3%	0.0%
Current FY	#	42,623	38720	1111	2532	260	21	14	2	14	5	60	22	116	6
	%	1.0%	0.9%	0.0%	0.1%	0.0%	0.0%	0.0%	0.0%	0.0%	0.0%	0.0%	0.0%	0.0%	0.0%
Difference	#	-9	-81	17	65	-10	-2	-5	-1	-1	-1	0	0	-1	1
Ratio Change	%	0.0%	-0.2%	0.0%	0.2%	0.0%	0.0%	0.0%	0.0%	0.0%	0.0%	0.0%	0.0%	0.0%	0.0%
Net Change	%	0.0%	-0.2%	1.6%	2.6%	-3.7%	-8.7%	-26.3%	-33.3%	-6.7%	-16.7%	0.0%	0.0%	-0.9%	20.0%
<b>TEMPORARY</b>															
Prior FY	#	3,210	2747	160	291	12	1	0	0	0	0	3	0	6	2
	%	100.0%	85.6%	5.0%	9.1%	0.4%	0.0%	0.0%	0.0%	0.0%	0.0%	0.1%	0.0%	0.2%	0.1%
Current FY	#	1,838	1617	90	125	6	1	0	0	0	0	0	0	4	1
	%	1.0%	0.9%	0.0%	0.1%	0.0%	0.0%	0.0%	0.0%	0.0%	0.0%	0.0%	0.0%	0.0%	0.0%
Difference	#	-1,372	-1,130	-70	-166	-6	0	0	0	0	0	-3	0	-2	-1
Ratio Change	%	0.0%	2.4%	-0.1%	-2.3%	0.0%	0.0%	0.0%	0.0%	0.0%	0.0%	-0.1%	0.0%	0.0%	0.0%
Net Change	%	-42.7%	-41.1%	-43.8%	-57.0%	-50.0%	0.0%	#DIV/0!	#DIV/0!	#DIV/0!	0.0%	-100.0%	#DIV/0!	-33.3%	-50.0%

Table A2: TOTAL WORKFORCE (PERMANENT EMPLOYEES ONLY) BY COMPONENT - Distributi

Employment Tenure	Total Employees	RACE/ETHNICITY							Multiple Races
		Hispanic or Latino	Non-Hispanic or Latino				Native Hawaiian or Other Pacific Islander	American Indian or Alaska Native	
			White	Black or African American	Asian				
All									
TOTAL FY	#	42,623	1,814	28,926	6,782	4,552	53	277	219
	%	1	15.9%	10.7%	0.1%	0.6%	0.5%	0.0%	0.0%
CLF (2000)	%	100	10.7%	72.7%	10.5%	3.6%	0.2%	0.6%	0.0%
51-O/S	#	753	19	415	273	36	0	4	6
	%	100.0%	2.5%	55.1%	36.3%	4.8%	0.0%	0.5%	31.6%
52-EDA	#	175	7	122	37	7	0	1	1
	%	100.0%	4.0%	69.7%	21.1%	4.0%	0.0%	0.6%	14.3%
53-BEA	#	496	18	322	104	50	0	1	1
	%	100.0%	3.6%	64.9%	21.0%	10.1%	0.0%	0.2%	5.6%
54-NOAA	#	12466	343	10340	1012	616	29	82	44
	%	100.0%	2.8%	82.9%	8.1%	4.9%	0.2%	0.7%	12.8%
55-ITA	#	1353	53	1005	195	85	0	3	12
	%	100.0%	3.9%	74.3%	14.4%	6.3%	0.0%	0.2%	22.6%
57-NIST	#	2785	76	2179	242	258	1	14	15
	%	100.0%	2.7%	78.2%	8.7%	9.3%	0.0%	0.5%	19.7%
59-MBDA	#	57	13	7	33	4	0	0	0
	%	100.0%	22.8%	12.3%	57.9%	7.0%	0.0%	0.0%	0.0%
61-NTIA	#	232	6	144	56	24	0	2	0
	%	100.0%	2.6%	62.1%	24.1%	10.3%	0.0%	0.9%	0.0%
62-NTIS	#	111	1	65	35	8	0	0	2
	%	100.0%	0.9%	58.6%	31.5%	7.2%	0.0%	0.0%	200.0%
63-CENSUS	#	13253	932	9063	2418	590	20	135	95
	%	100.0%	7.0%	68.4%	18.2%	4.5%	0.2%	1.0%	10.2%
64-OIG	#	122	4	75	26	15	0	1	1
	%	100.0%	3.3%	61.5%	21.3%	12.3%	0.0%	0.8%	25.0%
65-ESA	#	31	3	21	6	1	0	0	0
	%	100.0%	9.7%	67.7%	19.4%	3.2%	0.0%	0.0%	0.0%
67-BIS	#	366	10	242	87	24	0	1	2
	%	100.0%	2.7%	66.1%	23.8%	6.6%	0.0%	0.3%	20.0%
67-PTO	#	10423	329	4926	2258	2834	3	33	40
	%	100.0%	3.2%	47.3%	21.7%	27.2%	0.0%	0.3%	12.2%

PTOTAL	PHISPMAL	WHMAL	BLMAL	SIANM	HAWM	MINDM	Multiple Race	TTOTAL	HISPMAL	TWHMALE	TBLMALE	FASIANMAL	NHAWMAL	AMINDMAL	Multiple Race	AGENCY	
753	19	415	273	36	0	4	6	80	1	54	16	7	0	0	2	O/S	51
175	7	122	37	7	0	1	1	28	0	15	10	2	0	0	1	EDA	52
496	18	322	104	50	0	1	1	11	0	7	4	0	0	0	0	BEA	53
12466	343	10340	1012	616	29	82	44	349	6	286	30	19	4	3	1	NOAA	54
1353	53	1005	195	85	0	3	12	117	8	94	3	10	0	1	1	ITA	55
2785	76	2179	242	258	1	14	15	327	5	257	15	46	0	1	3	NIST	57
57	13	7	33	4	0	0	0	10	3	1	4	0	0	0	2	MBDA	59
232	6	144	56	24	0	2	0	53	0	48	3	2	0	0	0	NTIA	61
111	1	65	35	8	0	0	2	1	0	1	0	0	0	0	0	NTIS	62
13253	932	9063	2418	590	20	135	95	783	47	555	134	29	2	2	14	CENSUS	63
122	4	75	26	15	0	1	1	8	1	2	3	2	0	0	0	OIG	64
31	3	21	6	1	0	0	0	6	0	3	2	1	0	0	0	ESA	65
366	10	242	87	24	0	1	2	10	0	8	0	2	0	0	0	BIS	67
10423	329	4926	2258	2834	3	33	40	55	0	45	3	6	0	0	1	PTO	56

**Table B2: PERMANENT EMPLOYEES - TOTAL WORKFORCE BY COMPONENT- Distribution by Disability [OPM Form 256 Self-Identification Codes]**

Employment Tenure	Total	Total by Disability Status				Detail for Targeted Disabilities									
		[05] No Disability	[01] Not Identified	[06-94] Disability	Targeted Disability	[16,17] Deafness	[23,25] Blindness	[28,32-38] Missing Limbs	[64-68] Partial Paralysis	[71-78] Total Paralysis	[82] Convulsive Disorder	[90] Mental Re-tardation	[91] Mental Illness	[92] Distortion of Limb/Spine	
Total Work Force	#	42,623	38,720	1,111	2,532	260	21	14	2	14	5	60	22	116	6
	%	100.00%	90.84%	2.61%	5.94%	0.61%	0.05%	0.03%	0.00%	0.03%	0.01%	0.14%	0.05%	0.27%	0.01%
Federal High	%				2.27%										
51-O/S	#	753	688	21	40	4	0	0	0	0	0	2	0	2	0
	%	100.00%	91.37%	2.79%	5.31%	0.53%	0.00%	0.00%	0.00%	0.00%	0.00%	0.27%	0.00%	0.27%	0.00%
52-EDA	#	175	164	3	6	2	0	0	0	1	0	0	0	1	0
	%	100.00%	93.71%	1.71%	3.43%	1.14%	0.00%	0.00%	0.00%	0.57%	0.00%	0.00%	0.00%	0.57%	0.00%
53-BEA	#	496	464	14	17	1	1	0	0	0	0	0	0	0	0
	%	100.00%	93.55%	2.82%	3.43%	0.20%	0.20%	0.00%	0.00%	0.00%	0.00%	0.00%	0.00%	0.00%	0.00%
54-NOAA	#	12,466	11534	254	629	49	6	5	0	1	3	9	5	19	1
	%	100.00%	92.52%	2.04%	5.05%	0.39%	0.05%	0.04%	0.00%	0.01%	0.02%	0.07%	0.04%	0.15%	0.01%
55-ITA	#	1,353	1294	16	39	4	0	1	0	0	0	0	0	3	0
	%	100.00%	95.64%	1.18%	2.88%	0.30%	0.00%	0.07%	0.00%	0.00%	0.00%	0.00%	0.00%	0.22%	0.00%
57-NIST	#	2,785	2558	70	134	23	1	2	2	1	0	2	6	7	2
	%	100.00%	91.85%	2.51%	4.81%	0.83%	0.04%	0.07%	0.07%	0.04%	0.00%	0.07%	0.22%	0.25%	0.07%
59-MBDA	#	57	47	3	6	1	0	0	0	0	0	0	1	0	0
	%	100.00%	82.46%	5.26%	10.53%	1.75%	0.00%	0.00%	0.00%	0.00%	0.00%	0.00%	1.75%	0.00%	0.00%
61-NTIA	#	232	210	4	18	0	0	0	0	0	0	0	0	0	0
	%	100.00%	90.52%	1.72%	7.76%	0.00%	0.00%	0.00%	0.00%	0.00%	0.00%	0.00%	0.00%	0.00%	0.00%
62-NTIS	#	111	99	1	7	4	0	0	0	0	0	0	2	1	1
	%	100.00%	89.19%	0.90%	6.31%	3.60%	0.00%	0.00%	0.00%	0.00%	0.00%	0.00%	1.80%	0.90%	0.90%
63-CENSUS	#	13,253	11542	385	1208	118	7	4	0	5	1	31	7	62	1
	%	100.00%	87.09%	2.91%	9.11%	0.89%	0.05%	0.03%	0.00%	0.04%	0.01%	0.23%	0.05%	0.47%	0.01%
64-OIG	#	122	110	2	10	0	0	0	0	0	0	0	0	0	0
	%	100.00%	90.16%	1.64%	8.20%	0.00%	0.00%	0.00%	0.00%	0.00%	0.00%	0.00%	0.00%	0.00%	0.00%
65-ESA	#	31	30	0	1	0	0	0	0	0	0	0	0	0	0
	%	100.00%	96.77%	0.00%	3.23%	0.00%	0.00%	0.00%	0.00%	0.00%	0.00%	0.00%	0.00%	0.00%	0.00%
67-BIS	#	366	349	2	13	2	0	0	0	0	0	0	0	2	0
	%	100.00%	95.36%	0.55%	3.55%	0.55%	0.00%	0.00%	0.00%	0.00%	0.00%	0.00%	0.00%	0.55%	0.00%

AGENCY	PTOTAL	Hispanic or Latino	White	Black or African American	Asian	Native Hawaiian or Other Pacific Islander	American Indian or Alaska Native	Multiple Races	Targeted Disability
BEA	496	18	322	104	50	0	1	1	1
Workforce		3.63	64.92	20.97	10.08	0.00	0.00	0.20	0.20
CLF		10.7	72.7	10.5	3.6	0.2	0.6	0.3	2.27
BIS	366	10	242	87	24	0	1	2	2
Workforce		2.73	66.12	23.77	6.56	0.00	0.27	0.00	0.55
CLF		10.7	72.7	10.5	3.6	0.2	0.6	0.8	2.27
CENSUS	13253	932	9063	2418	590	20	135	95	118
Workforce		7.03	68.38	18.24	4.45	0.15	1.02	0.72	0.89
CLF		10.7	72.7	10.5	3.6	0.2	0.6	0.8	2.27
EDA	175	7	122	37	7	0	1	1	2
Workforce		4.00	69.71	21.14	4.00	0.00	0.57	0.57	1.14
CLF		10.7	72.7	10.5	3.6	0.2	0.6	0.8	2.27
ESA	31	3	21	6	1	0	0	0	0
Workforce		9.68	67.74	19.35	3.23	0.00	0.00	0.00	0.00
CLF		10.7	72.7	10.5	3.6	0.2	0.6	0.8	2.27
ITA	1353	53	1005	195	85	0	3	12	4
Workforce		3.92	74.28	14.41	6.28	0.00	0.22	0.89	0.30
CLF		10.7	72.7	10.5	3.6	0.2	0.6	0.8	2.27
MBDA	57	13	7	33	4	0	0	0	1
Workforce		22.81	12.28	57.89	7.02	0.00	0.00	0.00	1.75
CLF		10.7	72.7	10.5	3.6	0.2	0.6	0.8	2.27
NIST	2785	76	2179	242	258	1	14	15	23
Workforce		2.73	78.24	8.69	9.26	0.04	0.50	0.54	0.83
CLF		10.7	72.7	10.5	3.6	0.2	0.6	0.8	2.27
NOAA	12466	343	10340	1012	616	29	82	44	49
Workforce		2.75	82.95	8.12	4.94	0.23	0.66	0.35	0.39
CLF		10.7	72.7	10.5	3.6	0.2	0.6	0.8	2.27
NTIA	232	6	144	56	24	0	2	0	0
Workforce		2.59	62.07	24.14	10.34	0.00	0.86	0.00	0.00
CLF		10.7	72.7	10.5	3.6	0.2	0.6	0.8	2.27
NTIS	111	1	65	35	8	0	0	2	4
Workforce		0.90	58.56	31.53	7.21	0.00	0.00	1.80	3.60
CLF		10.7	72.7	10.5	3.6	0	0	0.8	2.27
O/S	753	19	415	273	36	0	4	6	4
Workforce		2.52	55.11	36.25	4.78	0.00	0.53	0.80	0.53
CLF		10.7	72.7	10.5	3.6	0.2	0.6	0.8	2.27
OIG	122	4	75	26	15	0	1	1	0
Workforce		3.28	61.48	21.31	12.30	0.00	0.82	0.82	0.00
CLF		10.7	72.7	10.5	3.6	0.2	0.6	0.8	2.27
Sub Total	32200	1485	24000	4524	1718	50	244	179	208
Workforce		4.61	74.53	14.05	5.34	0.16	0.76	0.56	0.65
CLF		10.7	72.7	10.5	3.6	0.2	0.6	0.8	2.27
PTO	10423	329	4926	2258	2834	3	33	40	53
Workforce		3.16	47.26	21.66	27.19	0.03	0.32	0.38	0.51
CLF		10.7	72.7	10.5	3.6	0.2	0.6	0.8	2.27
TOTAL	42,623	1814	28926	6782	4552	53	277	219	261
Workforce		4.26	67.86	15.91	10.68	0.12	0.65	0.51	0.61
CLF		10.7	72.7	10.5	3.6	0.2	0.6	0.8	2.27